

MAPMAKING

Visitors Management in Protected Wetlands: Making them the allies of conservation

Valsaín (Segovia, Spain), 24-28 July 2017

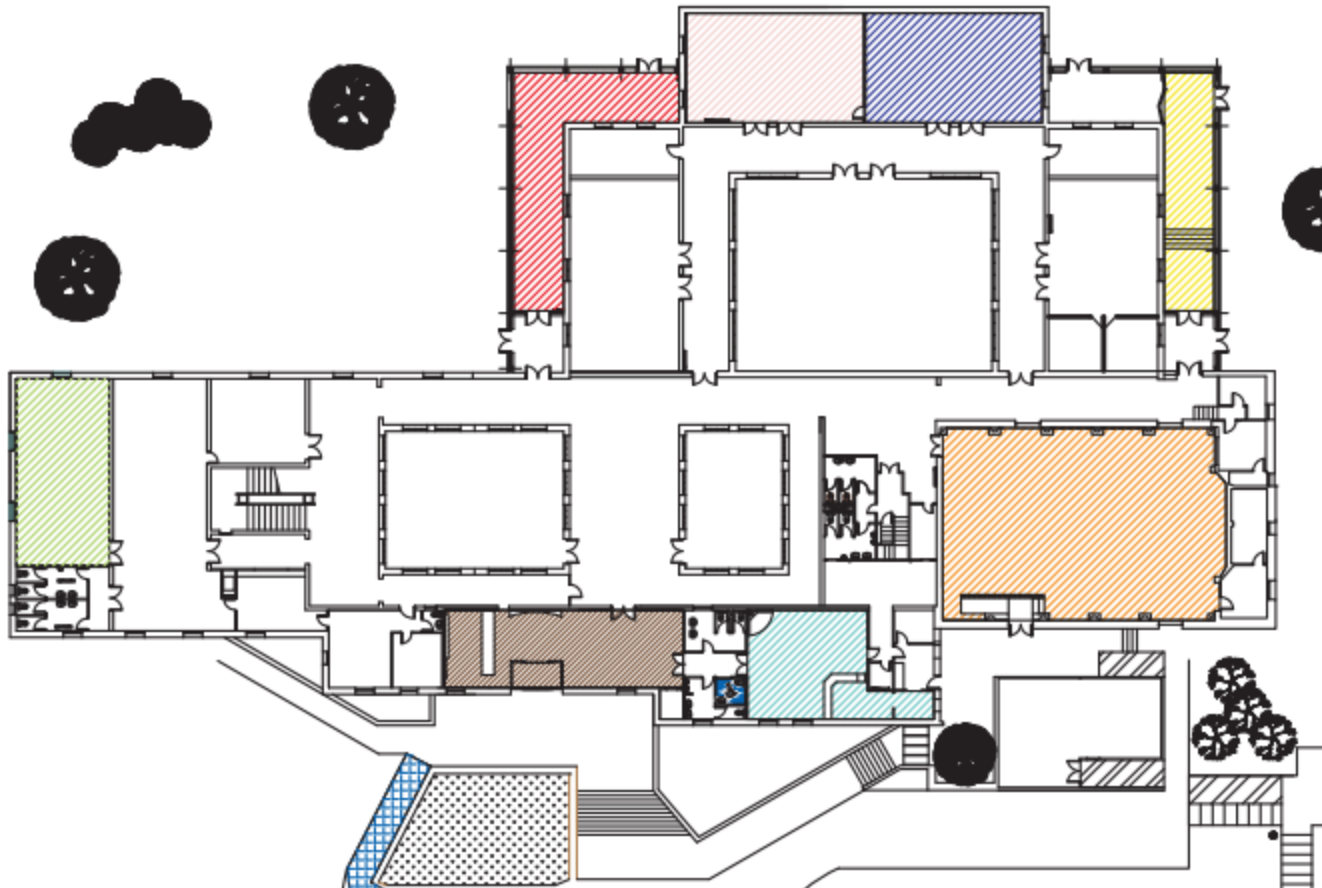
SUSTAINABLE
TOURISM AND
HERITAGE
Enhancing and
Planning Tools
2017 Ed. Universitat
Politécnica de València



●● CENEAM Photo Library: Geográfica Films

The download of the editable
worksheets is available on:
http://bit.ly/2057_Fichas

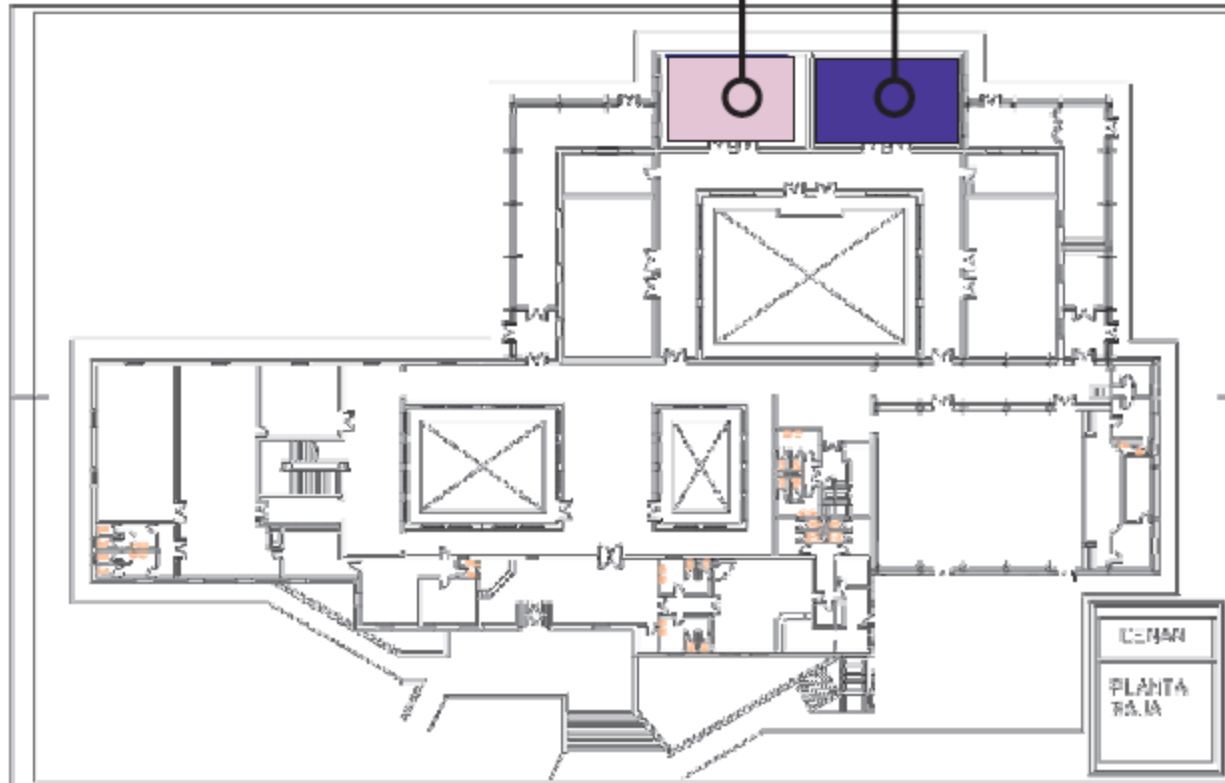




*Visitors Management in Protected Wetlands:
Making them the allies of conservation*



● ● Aulas 1 y 2





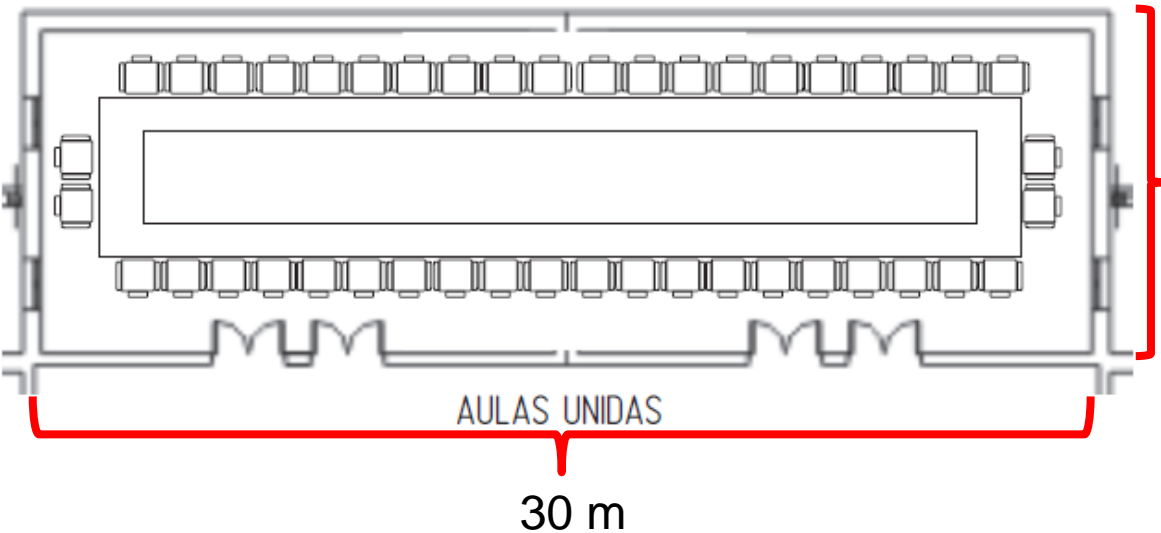
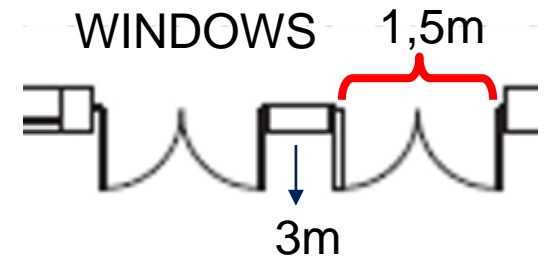
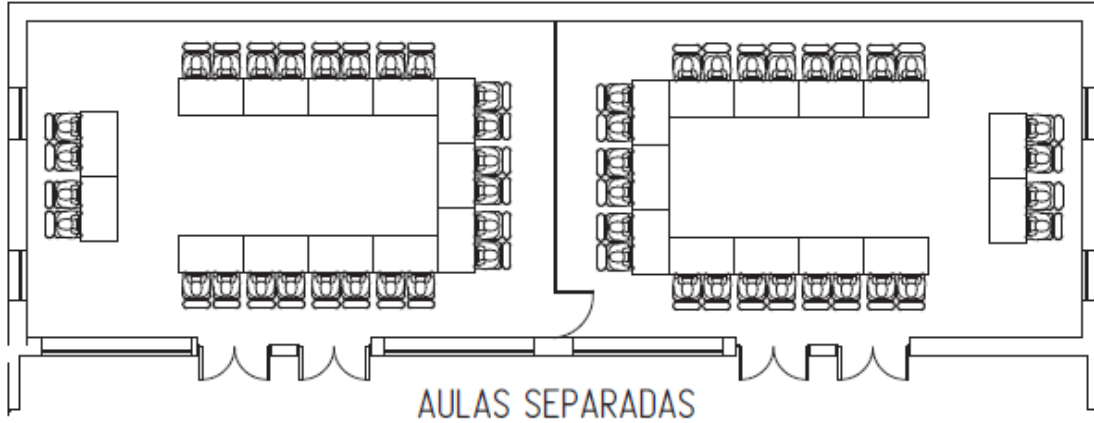
Superficie

156 m²

Aforo máximo

90 pax

Disposiciones ejemplo



9m

30 m





Minimum reading distance of panels	1,00 m	
Rows of people in front of the interpretative-educational panels	2 rows	
Minimum viable area per visitor in enclosed spaces in group activities	1.20 m ²	
Minimum viable area per visitor in open spaces in group activities	1.50 m ²	
Minimum viable area per visitor in dynamic recreational activities	4 m	
2% occupancy of the equipment in the public use area		
3% Parking space for cars (maneuverability)	5,00 m x 3,00 m	
Space for parking space bus (capacity to maneuver)	15.00 m x 5.50 m	
Maximum number of persons per car	4	
Maximum number of persons per bus	50	
Number of people in a car for the disabled	3	
% Of maximum slope in vials	5%	
Minimum distance of visual contact between people in trails (autonomous visits)	50,00 m	in linear trails
% Of trail occupancy by users	10%	
Safety distance on edges of large slopes	1,00 m	to the edge
Speed on an interpretive trail	0.5 m / sec	
Speed on a recreational trail for bicycles and horses	20 km / h	
Hours of visits: Number of hours that public spaces are open		
Average group size	20 people	

